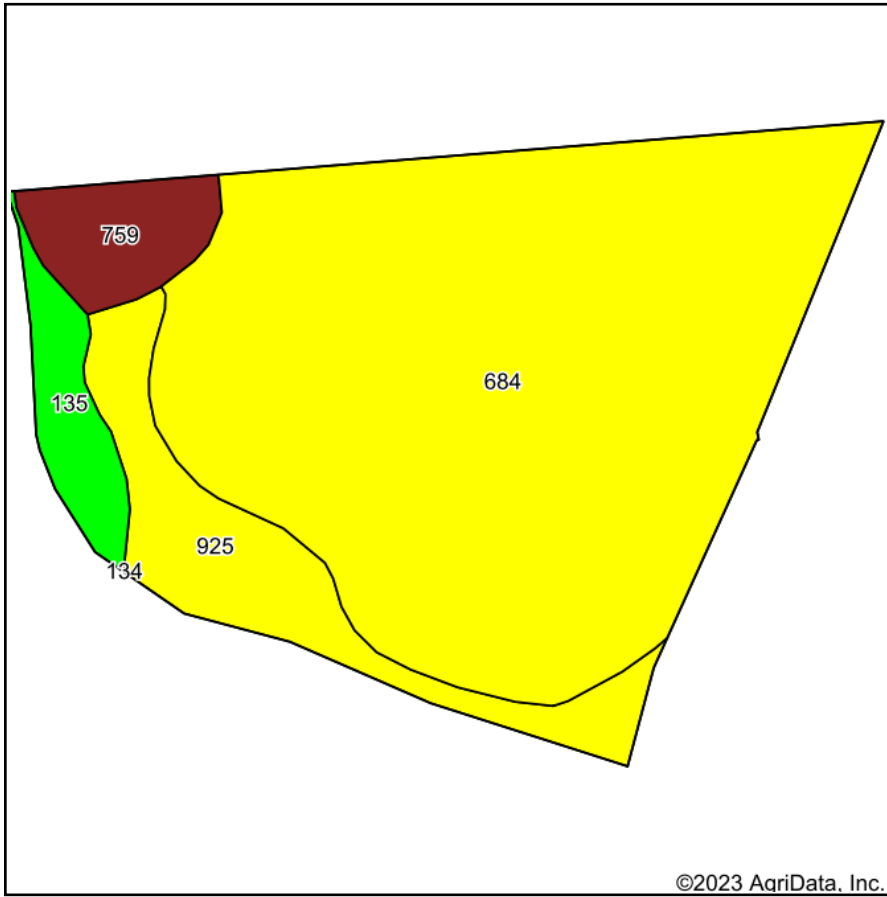
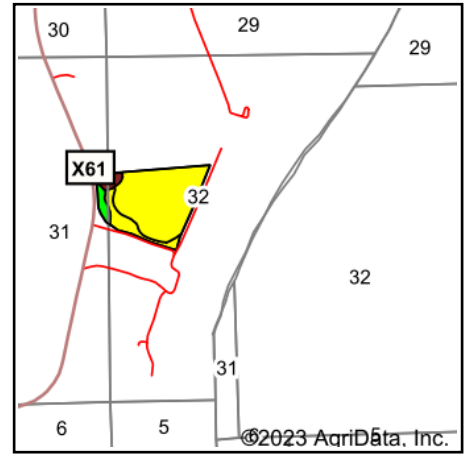


Soils Map



Soils data provided by USDA and NRCS.



State: **Iowa**
 County: **Louisa**
 Location: **32-75N-2W**
 Township: **Port Louisa**
 Acres: **34.28**
 Date: **9/11/2023**



Maps Provided By:



Area Symbol: IA1115, Soil Area Version: 26

Code	Soil Description	Acres	Percent of field	CSR2 Legend	Non-Irr Class *c	Irr Class *c	CSR2**	CSR
684	Elrick sandy loam, 0 to 2 percent slopes	26.38	77.0%		IIIIs		56	43
925	Toolesboro loam, 0 to 2 percent slopes	4.46	13.0%		IIw		52	45
759	Fruitfield sand, 0 to 3 percent slopes	1.82	5.3%		IVs	IIIs	26	40
135	Coland clay loam, 0 to 2 percent slopes	1.62	4.7%		IIw		71	80
Weighted Average					2.88	*-	54.6	44.8

**IA has updated the CSR values for each county to CSR2.

*c: Using Capabilities Class Dominant Condition Aggregation Method

*- Irr Class weighted average cannot be calculated on the current soils data due to missing data.

Soils data provided by USDA and NRCS.